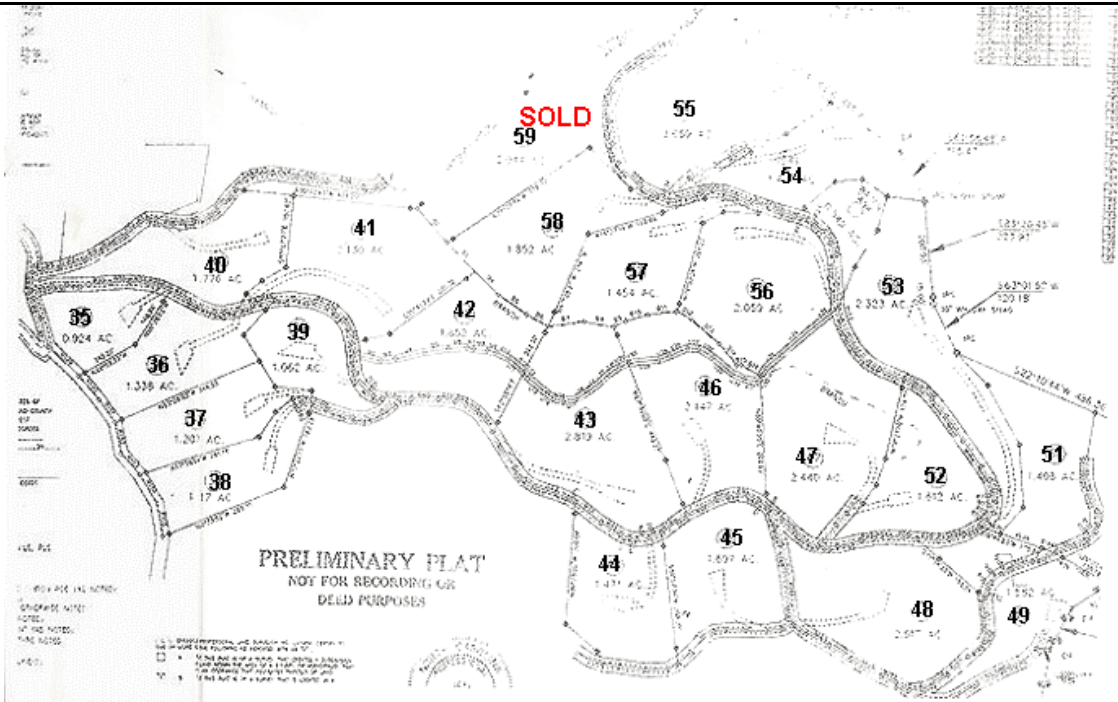


ELKHORN RIDGE PHASE II PLATS, PRICES AND AVAILABLE LOTS



**All Lots Include Driveway and Home Site, as well as underground utilities,
city water and septic approval, fire hydrants and street lighting at key locations.**

Lot #	Acreage	Price	Description
35	0.924	\$159,900	180 Degree View, Long Range Views (20+ Miles), View Of Wayah Bald And Cowee Mountain Range, Easy Driveway, Incredible Year Round View, Ridge Top
36	1.338	\$174,900	Large Lot, 180 Degree View, Long Range Views (20+ Miles), View Of Wayah Bald And Cowee Mountain Range, Easy Driveway, Incredible Year Round View, Ridge Top
37	1.207	\$139,900	180 Degree View, Long Range Views (20+ Miles), Mature Hardwoods, Hemlock, Ridge Top
38	1.117	\$142,900	180 Degree View, Long Range Views (20+ Miles), Mature Hardwoods, Rhododendron, Overlook Pasture, Ridge Top
39	1.062	\$134,900	Gentle Home Site, Super Views (Valley & Long Range Unobstructed), Gentle Driveway, Large Building Site
40	1.776	\$98,900	Northeast Exposure, Large Lot, Long Range View, Lots Of Mature Hardwoods, Private House Site
42	1.852	\$139,900	Large Lot, 203 Ft On Bold Creek, Extra Large House Site, Gentle Drive, East

			Exposure, Lots Of Mature Hardwoods, Long Winter Views, Private, Setting, ** Note: Utility Easement - 146 Ft
43	2.819	\$134,900	Large Lot, Creek Frontage, Gentle Sloping Site, Northeast Exposure, Mature Hardwoods, Gentle Drive
44	1.471	\$124,900	Great Building Site, Long Range Mountain Views, Nestled Between Gentle Ridges, Cove Setting. Very Gentle Slopes, Magnificent Hardwood Trees
45	1.697	\$159,900	Outstanding House Site, Multiple Long Range Views, Knoll Top, Mature Hardwoods, Very Gentle Site, East Exposure, Must See
46	2.147	\$139,900	Unique Finger Ridge Site, Nestled In Cove, Mature Hardwoods, 81 Ft Of Bold Creek Frontage. Gentle Walk To Creek, Northeast View
47	2.440	\$119,900	Very Gentle House Site, 300 Ft Of Creek Frontage, Private Setting, Gentle Knoll In Cove, Walk Path To Creek
48	2.517	\$149,900	Large Lot, Of The Most Gentle Lots In Community, Excellent Top Soil, Mature Hardwoods, Nestled In Gentle Cove, East Exposure
52	1.612	\$69,900	Great Garden Area, Very Gentle Lot, Spring Head On Property, Mature Hardwoods, Cove Setting, Small Stream
54	1.407	\$134,900	Top Of Ridge, 2 Way View (North & South), Mountain Laurel, Private Setting, Hardwoods, Easy Building Site
55	2.659	\$349,900	Top Of The World, 360 Degree Long Range Views (Wayah Bald, Standing Indian, Cowee Mountain Range, Views To Georgia), Hardwoods, Laurel, Large Home Site, 1 Of A Kind
56	2.059	\$79,900	Large Lot, 237 Ft On Bold Creek, Mountain Laurel, West View
57	1.454	\$64,900	Mountain View, 290 Ft On Bold Creek, Mountain Laurel, Listen To Noisy Creek, Driveway, Home Site In
58	1.852	\$124,900	Awesome 20+ Mile Views, Mountain Laurel, North View, Views To Cowee Mountain Range And Trimont Mountain, Hardwoods, White And Yellow Pine Trees, Awesome House Site, 293 Ft Creek Frontage
59	----- SOLD -----		
All Lots Include Driveway and Home Site, as well as underground utilities, city water and septic approval, fire hydrants and street lighting at key locations.			